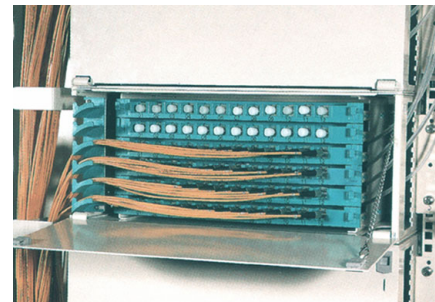
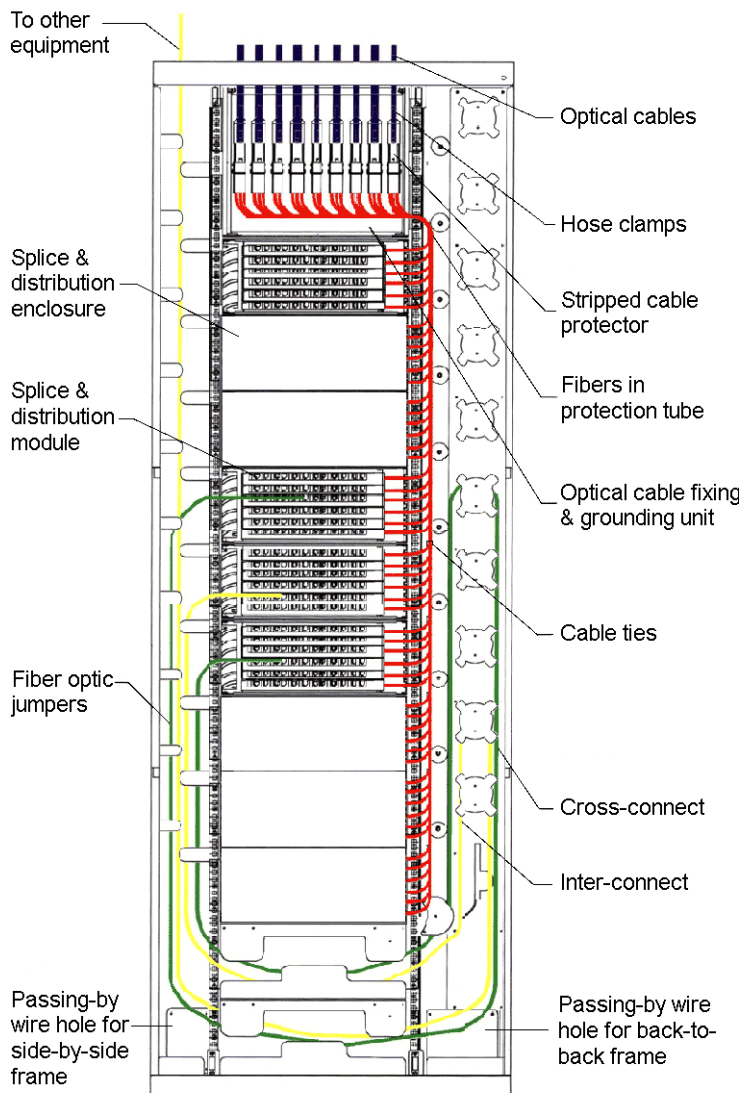
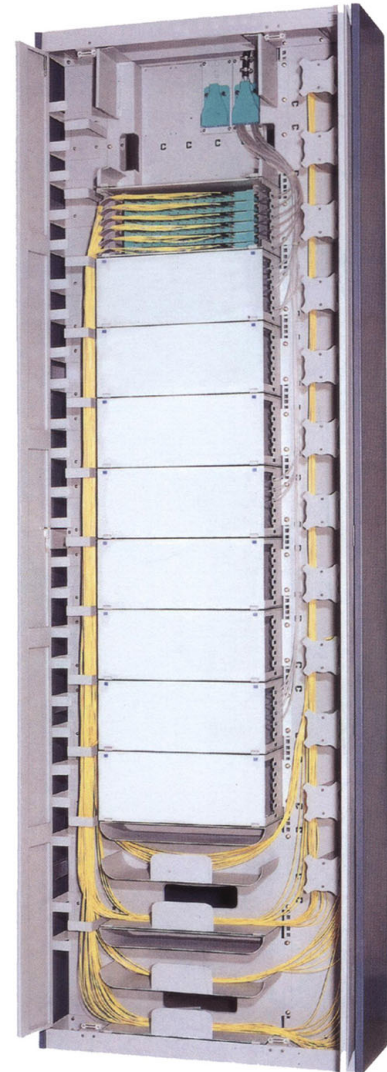




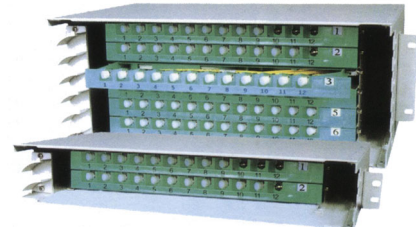
OPTICAL DISTRIBUTION FRAME (Rack System)

- Standard 19" installation; fully enclosed structure
- Full front operation; can be installed against wall, side-by-side or back-to-back
- Complete cable routing design with fiber bend radius over 40mm
- Modular design and easy installation
- Inlet/outlet cables from top or bottom
- Optimal arrangement for patch cords with fiber storage units
- Reliable holding, protection and grounding for optical cables
- Suitable for ribbon and non-ribbon optical fibers
- Can be installed with value-added modular units, such as fiber splitters, WDM, etc.
- Capacity up to 720 ports



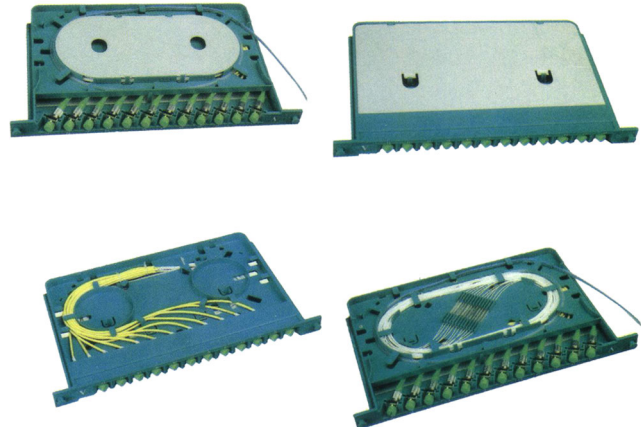
Splice & Distribution Enclosure

- Modular design for 19" standard frame
- Built in splice and distribution modules
- Each module has reliable positioning devices
- Modules can be drawn out from the enclosure
- Flexible installation and convenient operation and maintenance
- Compact size
- Capacity up to 72 ports (up to 6 splice & distribution modules)



Splice & Distribution Module

- Capacity up to 12 ports
- Combined splice and distribution
- Suitable for ribbon and non-ribbon cables
- Oblique installation of adapters
- Suitable for installation with FC, SC, LC and ST adapters



Ordering Information

Example: ODF - **R** **1** - **288** **FC**
1 2 3 4

1	Product Type	R = Rack System; E = Enclosure Unit; M = Module
2	Size	Size 1, 2 or 3 (see table below); Blank for module
3	Number of Ports	12, 24, 48, 72, 96, 144, 576, etc.
4	Adapter Type	FC, SC, ST, etc; Blank = unloaded

Note: Rack System will include all necessary enclosures, modules and accessories.

Ordering Guide

		Dimension	Max. Capacity
Rack System	Size 1	2000 x 840 x 300 mm ³	432 ports
	Size 2	2200 x 840 x 300 mm ³	504 ports
	Size 3	2600 x 840 x 300 mm ³	720 ports
Enclosure	Size 1	89 x 482 x 300 mm ³	24 ports
	Size 2	133 x 482 x 300 mm ³	48 ports
	Size 3	178 x 482 x 300 mm ³	72 ports
Module		25 x 320 x 200 mm ³	12 ports

* Specifications subject to change without prior notice.



PACIFIC INTERCONNECTIONS, LLC

1022 N 33RD Pl., Renton, WA 98056, USA.

Tel: (425) 277 9527 Fax: (425) 277 2599

www.pacificinterco.com