



RACK MOUNT SLIDE-OUT TYPE FIBER DISTRIBUTION ENCLOSURES

Description

The rack mount slide-out type fiber optic distribution enclosures perform fiber splicing, distribution, termination, patching, storage and management in one unit. They support both cross-connect and interconnect architecture, and provide interfaces between outside plant cables and transmission equipment.

Each distribution enclosure incorporates a slide-out drawer to allow full frontal access and operation. The slide-out drawer has universal adapter plug-ins on the patch panel and has splice tray(s) behind the patch panel. The universal adapter plug-in can accommodate a variety of adapters (see Fig. 3). It has high density and can house a maximum of 12 FC or SC simplex or ST or LC duplex or MTRJ adapters, 6 SC duplex or LC simplex adapters, and many other types of adapters. The adapter plug-in provides oblique installation of adapters to avoid laser hazard to eyes.

Additional splice trays can be stacked on top to increase capacity. Each splice tray can accommodate up to 24 single fiber splice protection sleeves (with diameter of 2.3mm) or 6 ribbon splice protection sleeves. Splice trays can be opened individually and removed from the drawer. Excess length of cables/pigtails is stored in reels behind the patch panel.

The distribution enclosures employ fiber guide mechanism at specific points of the fiber patch providing fiber bend control. Horizontal cable guide is also incorporated at on the front of the patch panel of each distribution enclosure to allow the horizontal routing of patch cords. The horizontal cable guide is removable and position adjustable. The outside-plant cable input ports are located at the rear of the side panels.

The fiber distribution enclosures are rack mountable in standard 19" or ETSI (515mm) equipment rack, and are available in Rack Units of 1 or 2.

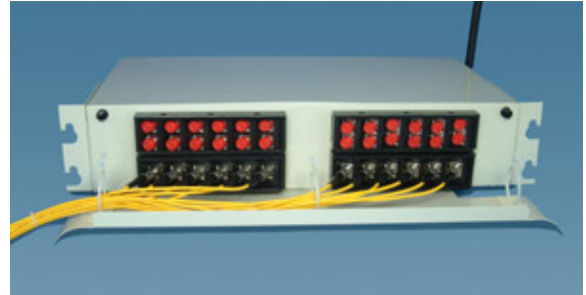


Fig. 1 Distribution enclosure



Fig. 2 Distribution enclosure with drawer slid out



Fig. 3 Adapter plug-ins



Fig. 4 Splice trays

Features

- 19", ETSI or 23" rack mount
- Provides fiber splicing, termination, management and storage in one unit
- Easy frontal access
- High density - up to 48 fibers for a 1U unit and 96 fibers for a 2U unit when LC duplex is used
- Slide-out patch panel and splice tray drawer
- Each splice tray is removable for off-rack splicing
- Supports single and ribbon fiber splices
- Horizontal cable guide removable and position adjustable
- Made from cold-rolled carbon steel sheets
- Universal adapter plug-in fits a variety of adapters such as SC, FC, LC, etc.
- High density adapter plug-in - 12 fibers for SC and 24 fibers for LC duplex
- Oblique installation of adapters to avoid laser hazard
- Low cost

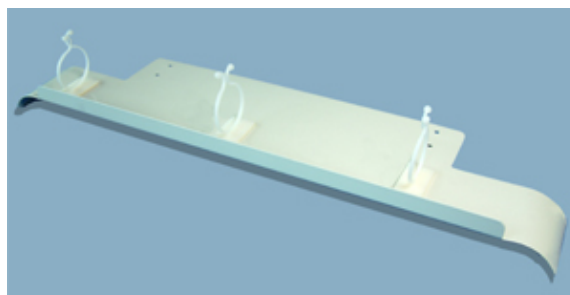


Fig. 5 Horizontal cable guide

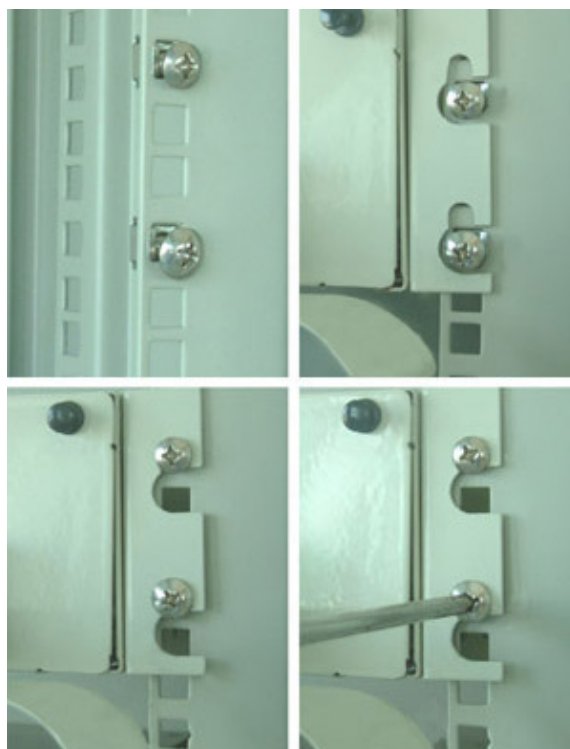


Fig. 6 Special design of bracket allowing easy installation

Applications

- Interconnects
- Cross-connects
- Independent service providing
- CATV networks
- Main distributions
- Intermediate distributions
- Telephone closets

Specifications

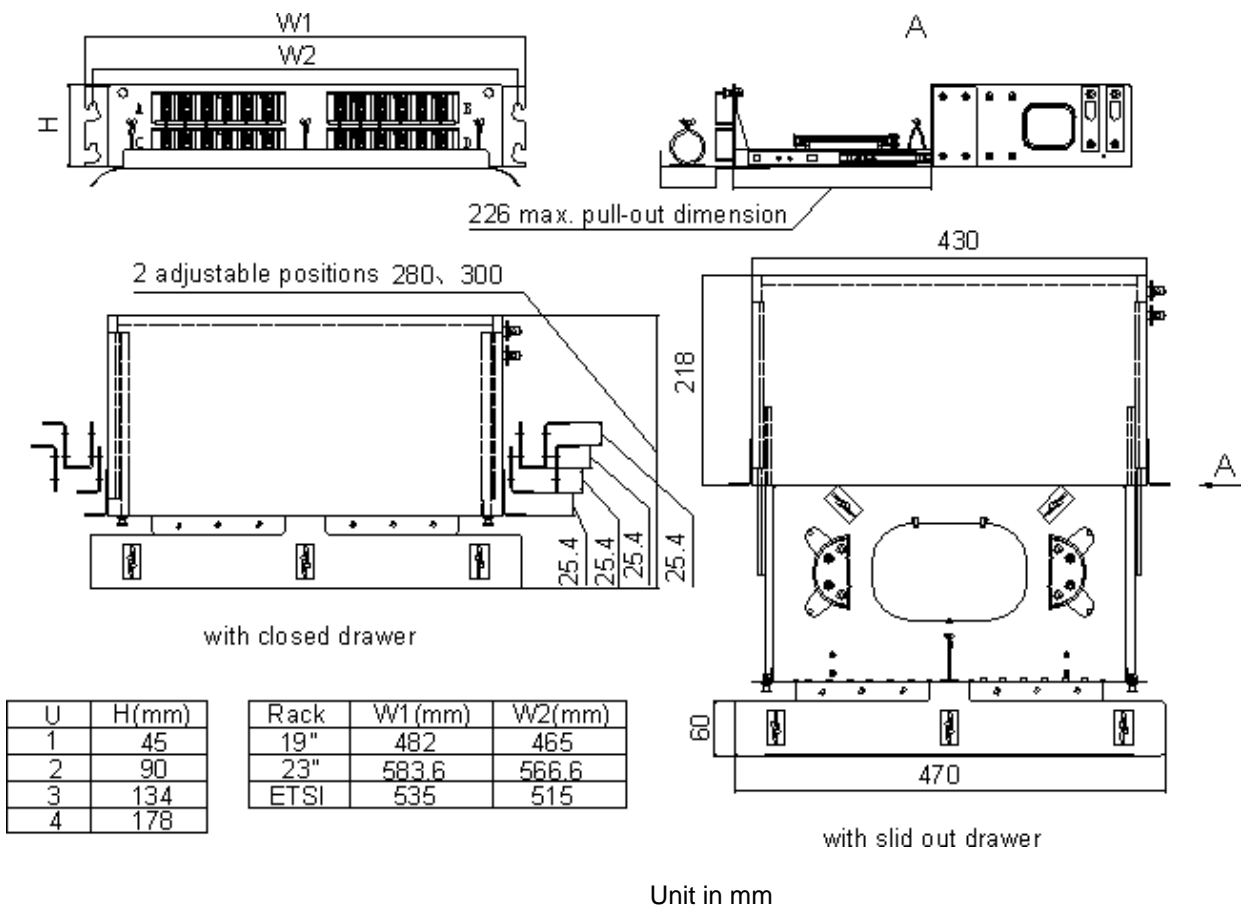
Distribution Enclosures				ODF-SB1	ODF-SB2	ODF-SB4
Type						
No. of Rack Units				1	2	4
Max Capacity*1	6-pack plug-in*2	Simplex		12 fibers	24 fibers	48 fibers
		Duplex		24 fibers	48 fibers	96 fibers
	12-pack plug-in*2	Simplex		24 fibers	48 fibers	96 fibers
		Duplex LC & MTRJ		48 fibers	96 fibers	192 fibers
Max. No. of Splice Trays				2	4	8
Weight				≤2.5kg	≤3kg	≤5kg
Dimension w/o brackets & cable guide*3				45x430x229 mm ³	90x430x229 mm ³	178x430x229 mm ³
Dimension with 19" brackets, w/o cable guide*3				45x482x229 mm ³	90x482x229 mm ³	178x482x229 mm ³
Dimension with 19" brackets & cable guide*3	Cable guide position 1			45x482x280 mm ³	90x482x280 mm ³	178x482x280 mm ³
	Cable guide position 2			45x482x300 mm ³	90x482x300 mm ³	178x482x300 mm ³

Specifications

Adapter Plug-in			
Adapter Type	LC duplex, FC, SC simplex, ST, MTRJ	LC simplex, SC duplex	Others
Max. Loaded Adapters	12 (called 12-pack)	6 (called 6-pack)	Please inquire
Splice Trays			
Splice Protection Sleeve Type	Single Fiber, 3mm dia.	Single Fiber, 2.3mm dia.	Ribbon Fiber
Max. Loaded Protection Sleeves	12	24	6

- *1 Max. capacity when 6-pack plug-ins and 12-pack plug-ins are installed.
- *2 6-pack plug-in is an adapter plug-in loaded with 6 adapters; 12-pack plug-in is an adapter plug-in loaded with 12 adapters.
- *3 Dimensions are HxWxD. The bracket width is for 19" rack. See drawing below for bracket widths for ETSI and 23" rack.

Dimensional Drawing



Ordering Information

Part Number: **ODF-SB 2 FC R 48 S**

1 2 3 4 5 6 7

1 Product Type	SB	Slide-out type fiber distribution enclosure,
	ST	Splice tray
	AP	Adapter plug-in, included with the main unit
	HG	Horizontal cable guide, included with the main unit
	BK	Mounting bracket, included with the main unit
2 Size	1	1U, loaded with 2 adapter plug-ins
	2	2U, loaded with 4 adapter plug-ins
	4	4U, loaded with 8 adapter plug-ins
	Blank	For adapter plug-in, splice tray and horizontal cable guide.
3 Adapter Type	FC	FC/PC
	FA	FC/APC
	SC	SC/PC simplex
	SC2	SC/PC duplex
	SA	SC/APC simplex
	SA2	SC/APC duplex
	ST	ST/PC
	LC	LC/PC simplex
	LC2	LC/PC duplex
	E2	E2000/PC simplex
	MR	MTRJ
	DN	DIN/PC
	DNA	DIN/APC
	Blank	For splice tray, horizontal cable guide and mounting bracket.
4 Adapter Grade	R	Single mode (SM)
	K	Multimode (MM)
	Blank	For splice tray, horizontal cable guide and mounting bracket.
5 Number of Ports	12	Single fiber, 12 ports, loaded with adapters and 1 splice tray
	24	Single fiber, 24 ports, loaded with adapters and 2 splice trays
	36	Single fiber, 36 ports, loaded with adapters, and 3 splice trays for 2U box or 2 splice trays for 1U box*4
	48	Single fiber, 48 ports, loaded with adapters, and 4 splice trays for 2U box or 2 splice trays for 1U box*4
	72	Single fiber, 72 ports, loaded with adapters, and 6 splice trays for 4U box or 4 splice trays for 2U box*4
	96	Single fiber, 96 ports, loaded with adapters, and 8 splice trays for 4U box or 4 splice trays for 2U box*4
	144	Single fiber, 144 ports, loaded with adapters, and 8 splice trays*4
	192	Single fiber, 192 ports, loaded with adapters, and 8 splice trays*4
	12R	Ribbon fiber, 12 ports, loaded with adapters and 1 splice tray
	24R	Ribbon fiber, 24 ports, loaded with adapters and 1 splice tray
	36R	Ribbon fiber, 36 ports, loaded with adapters and 1 splice tray
	48R	Ribbon fiber, 48 ports, loaded with adapters and 2 splice trays
	72R	Ribbon fiber, 72 ports, loaded with adapters and 2 splice trays
96R	Ribbon fiber, 96 ports, loaded with adapters and 3 splice trays	
144R	Ribbon fiber, 144 ports, loaded with adapters and 4 splice trays	
192R	Ribbon fiber, 192 ports, loaded with adapters and 6 splice trays	
Blank	Unloaded with adapters and splice trays, and for adapter plug-in, horizontal cable guide and mounting bracket.	

6	Bracket Type	S	For standard 19" rack
		E	For ETSI rack
		W	For 23" rack
		Blank	For adapter plug-in, splice tray and horizontal cable guide.
7	Custom Code	Blank	Standard
		XXX	000, 001, 002,The code is defined upon request.

*4 2.3mm diameter splice protection sleeves are used. 3mm diameter sleeves are used for others.

Part Number Examples	
Part Number	Description
ODF-SB1FCR12S	Distribution enclosure, 1U, 19" rack mount, 12 SM FC adapters loaded, for single fiber splicing.
ODF-SB1SA2R24E	Distribution enclosure, 1U, ETSI rack mount, 12 SM SC/APC duplex adapters loaded, for single fiber splicing.
ODF-SB1LC2K48S	Distribution enclosure, 1U, 19" rack mount, 24 MM LC duplex adapters loaded, for single fiber splicing.
ODF-SB2SC2R48S	Distribution enclosure, 2U, 19" rack mount, 24 SM SC duplex adapters loaded, for single fiber splicing.
ODF-SB2STK48W	Distribution enclosure, 2U, 23" rack mount, 48 MM ST adapters loaded, for single fiber splicing.
ODF-SB2MRK96S	Distribution enclosure, 2U, 19" rack mount, 48 MM MTRJ adapters loaded, for single fiber splicing.
ODF-SB4SCK72S	Distribution enclosure, 4U, 19" rack mount, 72 MM SC simplex adapters loaded, for single fiber splicing.
ODF-SB4FAR96S	Distribution enclosure, 4U, 19" rack mount, 96 SM FC/APC simplex adapters loaded, for single fiber splicing.
ODF-SB4LC2R144E	Distribution enclosure, 4U, ETSI rack mount, 72 SM LC duplex adapters loaded, for single fiber splicing.
ODF-SB2LC2R96RS	Distribution enclosure, 2U, 19" rack mount, 48 SM LC duplex adapters loaded, for ribbon fiber splicing.
ODF-SB4LC2R144RS	Distribution enclosure, 4U, 19" rack mount, 72 SM LC duplex adapters loaded, for ribbon fiber splicing.
ODF-ST12	Splice tray for single fiber splice, 12 splice protection sleeves included.
ODF-ST24	Splice tray for single fiber splice, 24 splice protection sleeves included.
ODF-ST48R	Splice tray for ribbon fiber splice, 4 splice protection sleeves included.
ODF-ST72R	Splice tray for ribbon fiber splice, 6 splice protection sleeves included.
ODF-APFCR6	Adapter plug-in, 6 single mode FC adapters loaded.
ODF-APSAR12	Adapter plug-in, 12 single mode SC/APC simplex adapters loaded.
ODF-APSC2K12	Adapter plug-in, 6 multimode SC duplex adapters loaded.
ODF-APLC2K24	Adapter plug-in, 12 multimode LC duplex adapters loaded.
ODF-HG	Horizontal cable guide.
ODF-BKS	Mounting bracket for standard 19" rack.
ODF-BKE	Mounting bracket for ETSI rack.
ODF-BKW	Mounting bracket for 23" rack.

Products manufactured in
ISO 9001 certified facilities



Pacific Interconnections • www.pacificinterco.com • 425-2779527

We reserve the rights to make any changes to the product(s) or information contained herein without notice. No liability is assumed.