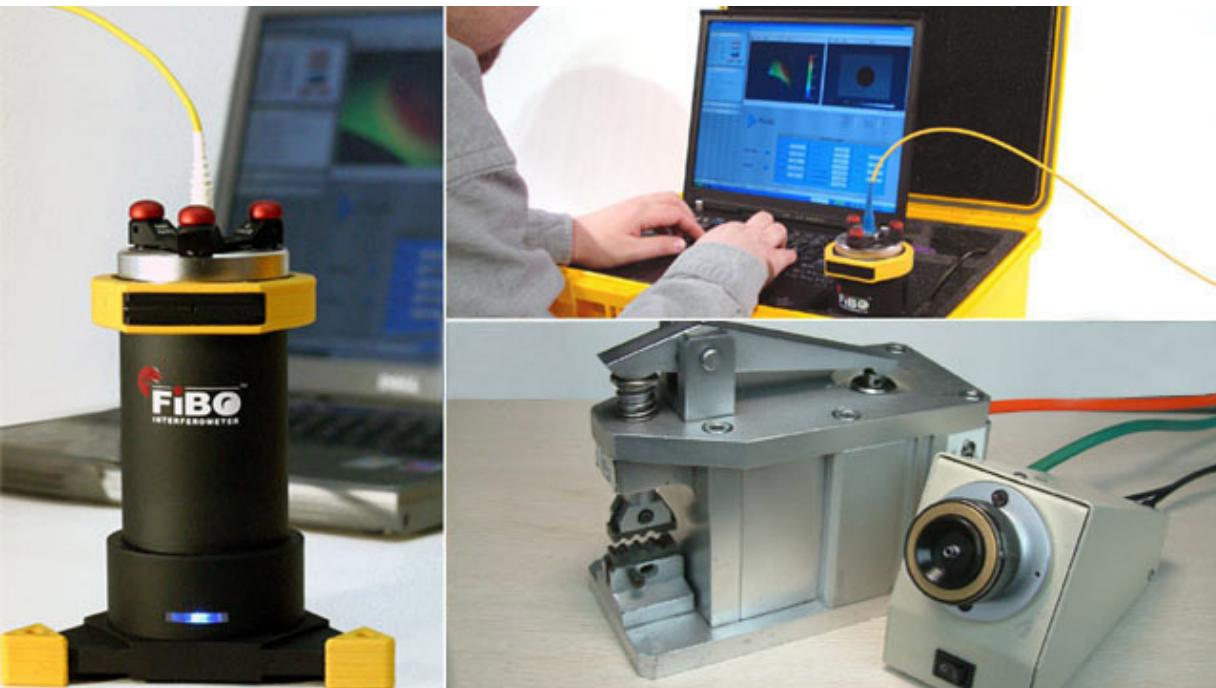


EQUIPMENT



Pneumatic crimper and interferometer



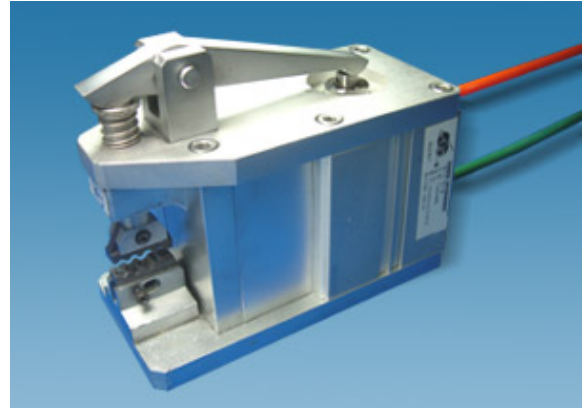
PACIFIC
INTERCONNECTIONS
- connecting the world with fiber optics



PNEUMATIC CRIMPER

Description

CRM-2 is mainly designed for fiber optic connector crimping to secure the connector with the optical cable. By replacing the crimp die with a press die, the machine can be used to press-fit ferrule and flange. It is featured with compact size, precise structure, safe to users and high quality. Custom made crimp dies are also available upon request.



Features

- Use pneumatic power
- Compact size and precise structure
- Large output force
- Easy replacement of dies
- Safe to users
- Step-on switch for applying force
- Air pressure adjustable
- Small cylinder implies small consumption of compressed air and energy

Applications

- Connector crimping for all kinds of connectors, such as SC, FC, ST, MTRJ, LC MU, etc
- Press fitting for ferrule and flange
- Other crimping and press fitting application

Specifications

Efficiency (no. of crimping per min.)	120 crimping / min
Air Pressure	0.65 ~ 0.7 Mpa
Max. Output force	378-528 kg
Air Consumption for each crimping	0.25L
Motion Length	16mm
Size	210mmX95mmX160mm

Ordering Information

Part Number: **CRM- 2 001**

1

1 Crimp Die Size Blank No crimp die included
001 Consult our sales rep.

Products manufactured in
ISO 9001 certified facilities



Pacific Interconnections • www.pacificinterco.com • 425-2779527

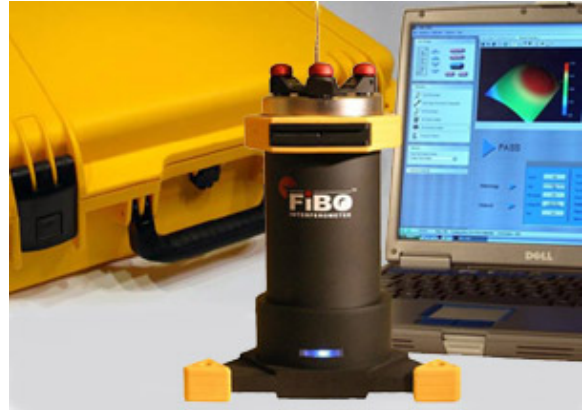
We reserve the rights to make any changes to the product(s) or information contained herein without notice. No liability is assumed.



INTERFEROMETER

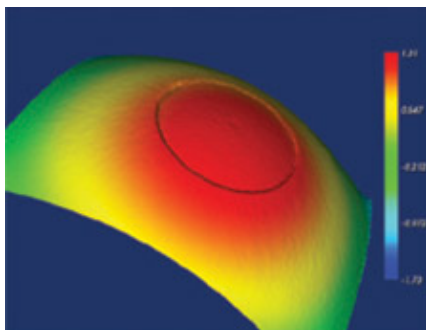
Description

FiBO® 250 is a true phase-shifting Michelson interferometer for automated non-contact fiber optic connector endface testing that combines interferometric 3D surface mapping and 2D visual inspection capabilities in one compact, rugged, and portable design. It comes with a full featured and user-friendly software. Its unique design of connector adapters allow easy change of connector types without re-calibration.

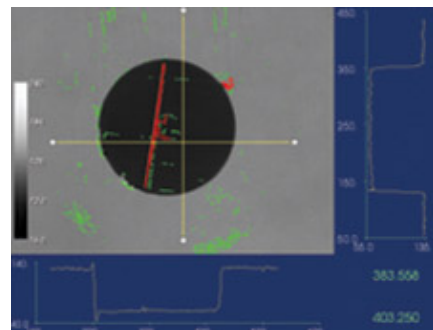


Features

- 3D measurements of radius, fiber height, apex offset, and roughness as well as full 2D defect analysis.
- Fixed focal length magnifier and diffraction-limited optical design deliver high contrast images, maximum system stability, and accurate readings.
- Pre-aligned, kinematic adapters guarantee exact fiber positioning automatically. No tedious adjustments or calibration is necessary when changing between different connector types.
- A full line of adapters are available for numerous connector styles used on the market today such as SC/PC, SC/APC, FC/PC, FC/APC, ST, LC/PC, LC/APC, LSH/PC, LSH/APC, MU/PC, 1.25mm and 2.5mm bare ferrule, and others.
- Extremely compact. Use as a portable device in the field or on the bench. No additional power supply or external interface board is required.
- Advanced, yet easy-to-use FiBO Code™ software fully controls all hardware functions and saves resulting data in a flexible Access® database format that is easily imported into Excel.
- Fully compliant with measurement requirements set forth in international standards. Optional NIST traceability for 2D and 3D calibration targets.
- Passed part 15 of the FCC rules for Class A digital device and is CE certified.



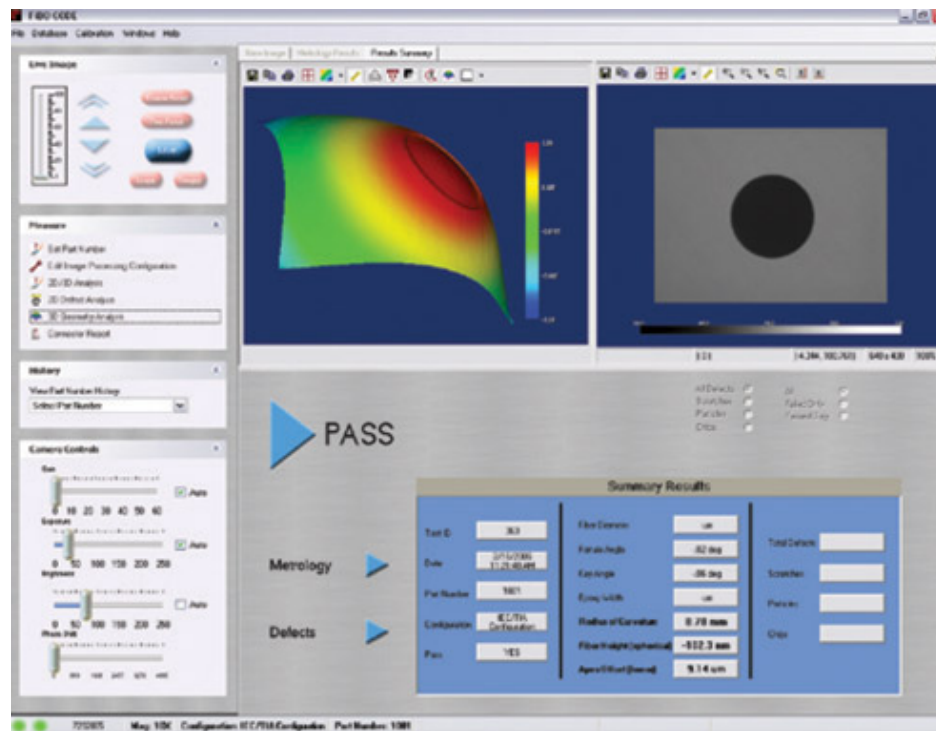
Powerful 3D metrology capabilities



Full featured 2D defect detection

FiBO Code™ Software

- Displays live image of connector endface in interferometric as well as visual inspection modes, up to 30 frames per second.
- Offers parameter setup for customizable pass/fail limits and measurement zones.
- Performs interferometric 3D and visual inspection 2D measurements.
- Provides auto focus and manual focus.
- Allows system calibration of 2D, 3D, phase-shift, and apex offset parameters.
- Saves measured data in a flexible Microsoft Access database format.
- Furnishes an Engineering Mode to block certain functions.



Specifications

Basic	
Measurement Technique	Non contact, phase-shifting Michelson interferometry
Configuration	Portable or tabletop; special mount for polishing plate interface
Connector Adapters	ST, FC/PC, FC/APC, SC/PC, SC/APC, LC/PC, LC/APC, LSH/PC, LSHAPC, MU/PC
Computer Interface	USB 2.0
Power Supply	None (all power delivered over USB cable)
Size	Height 165mm x Diameter 64mm
Weight	2lb. 5oz (1040 grams)
LED Wavelength	640nm
Optical Magnification	10x
On Screen Magnification	480x (19 inch screen)
Lateral Resolution (um/px)	0.56
FOV Diagonal	450

Specifications

Repeatability/Reproducibility	
Radius (mm)	0.1/0.25%
Apex Offset (um)	0.5/1
Fiber Height (nm)	1/1.5

Package Information

The FiBO package includes: FiBO 250 series hardware, laptop computer, two kinematic adapters, three calibration targets, FiBO Code™ software, carrying case, USB 2.0 cable, hardware key and printed manual.

Ordering Information

Part Number: **FiBO-250**

1

1 Model Number 250 Standard model for fiber optic connector measurement
 300 For measurement of other device. Please inquire.

Products manufactured in
ISO 9001 certified facilities



Pacific Interconnections • www.pacificinterco.com • 425-2779527

We reserve the rights to make any changes to the product(s) or information contained herein without notice. No liability is assumed.